

Oportunidad de Capital



TORONTO STOCK EXCHANGE &
TSX VENTURE EXCHANGE

Comision Minera 15/11/2022

CANADA

GLOBAL LEADERSHIP, WORLD-CLASS FINANCIAL
INSTITUTIONS AND ECONOMIC STABILITY

#1

IN G20 FOR DOING BUSINESS
(2022-2026)

#1

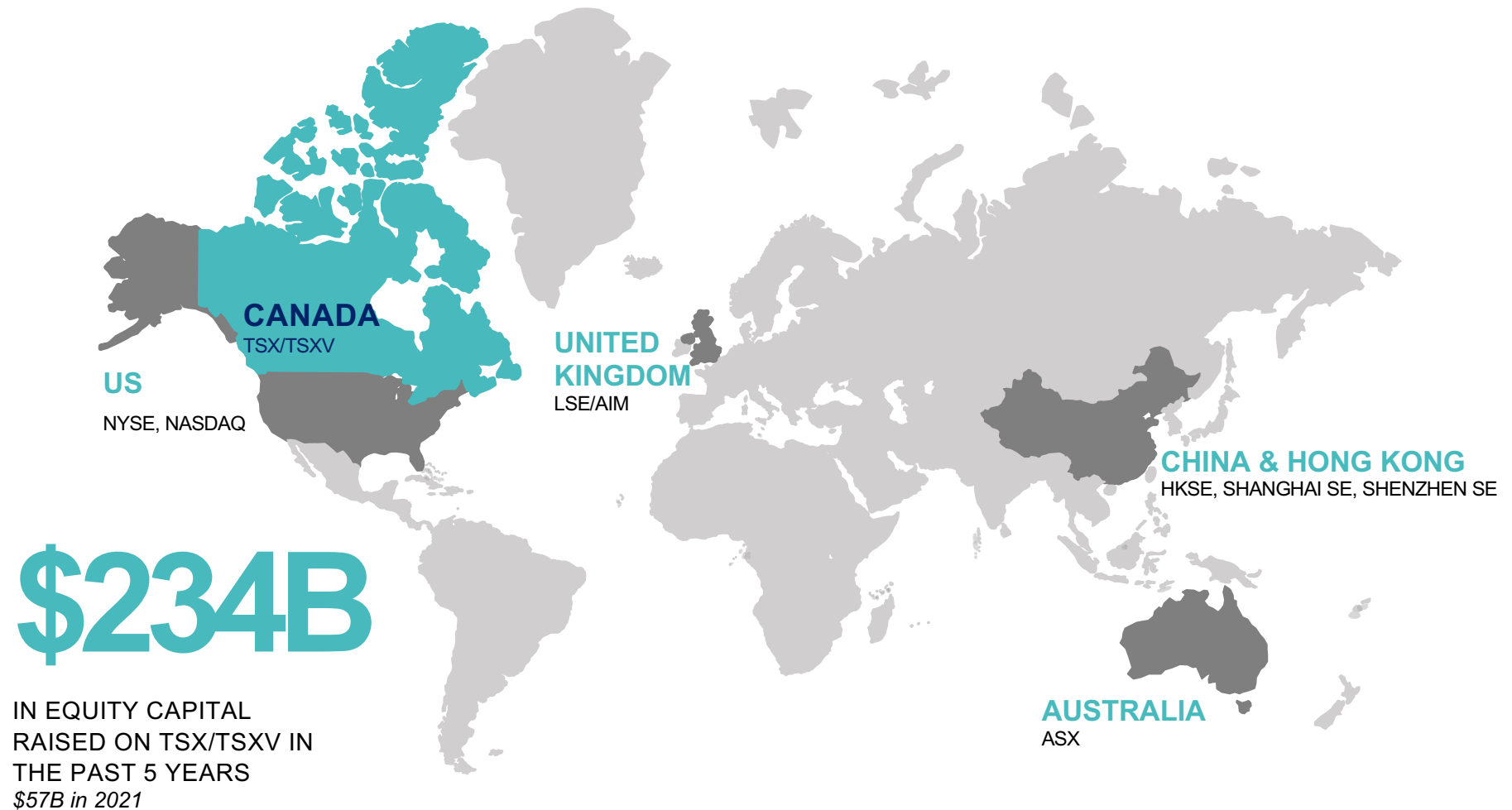
LOWEST DEBT-TO-GDP
AMONG G7

#2

SOUNDEST BANKING
SYSTEM IN THE G20

Source: The Economist Intelligence Unit, via Global Affairs Canada, December 2021.
The World Economic Forum ranked Canada as one of the top 2 soundest banking systems for over a decade.

TOP 5 HUBS FOR EQUITY CAPITAL



GLOBAL CAPITAL AND LIQUIDITY

THE WORLD'S LARGEST ASSET MANAGERS INVEST AND TRADE ON TSX

Bank of America
Merrill Lynch

BARCLAYS
CAPITAL

CANTOR
Pitzgerald

citi

CREDIT SUISSE

Goldman
Sachs

HSBC

INSTINET
A NOMURA COMPANY

J.P.Morgan

MACQUARIE

Morgan Stanley

1805 PICTET

RAYMOND JAMES

SOCIETE
GENERALE

UBS

40%

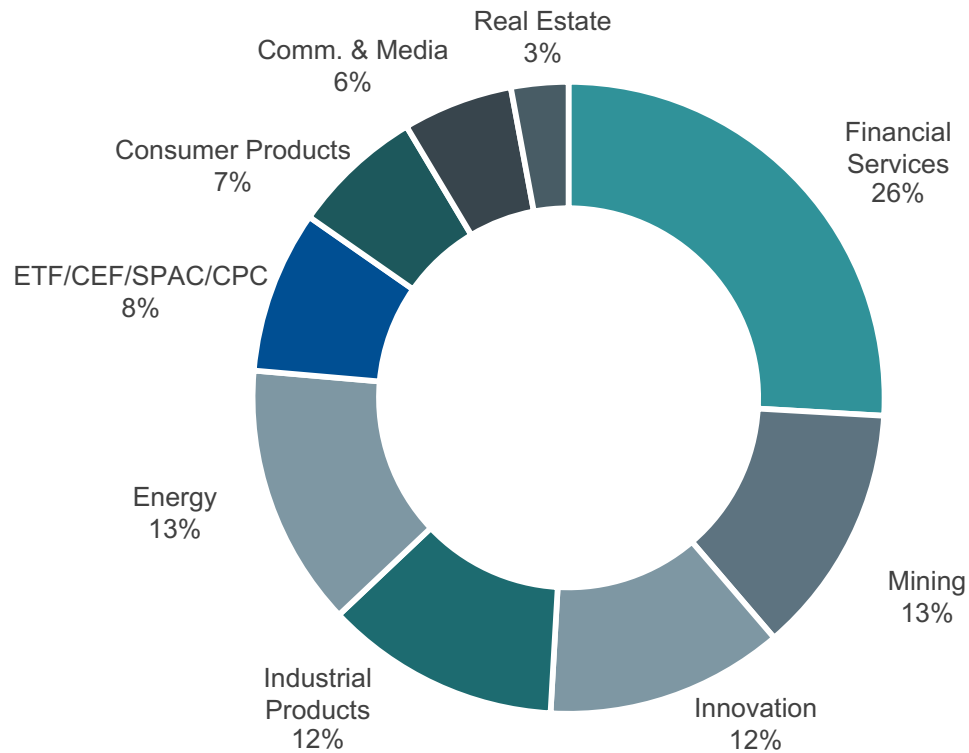
OF DAILY TRADING ORIGINATES
FROM OUTSIDE CANADA

25%

OF TSX AND TSXV MEMBER FIRMS ARE
HEADQUARTERED OUTSIDE CANADA

A TRULY DIVERSE MARKET

\$4.3 TRILLION OF MARKET CAPITALIZATION ACROSS DIVERSE SECTORS

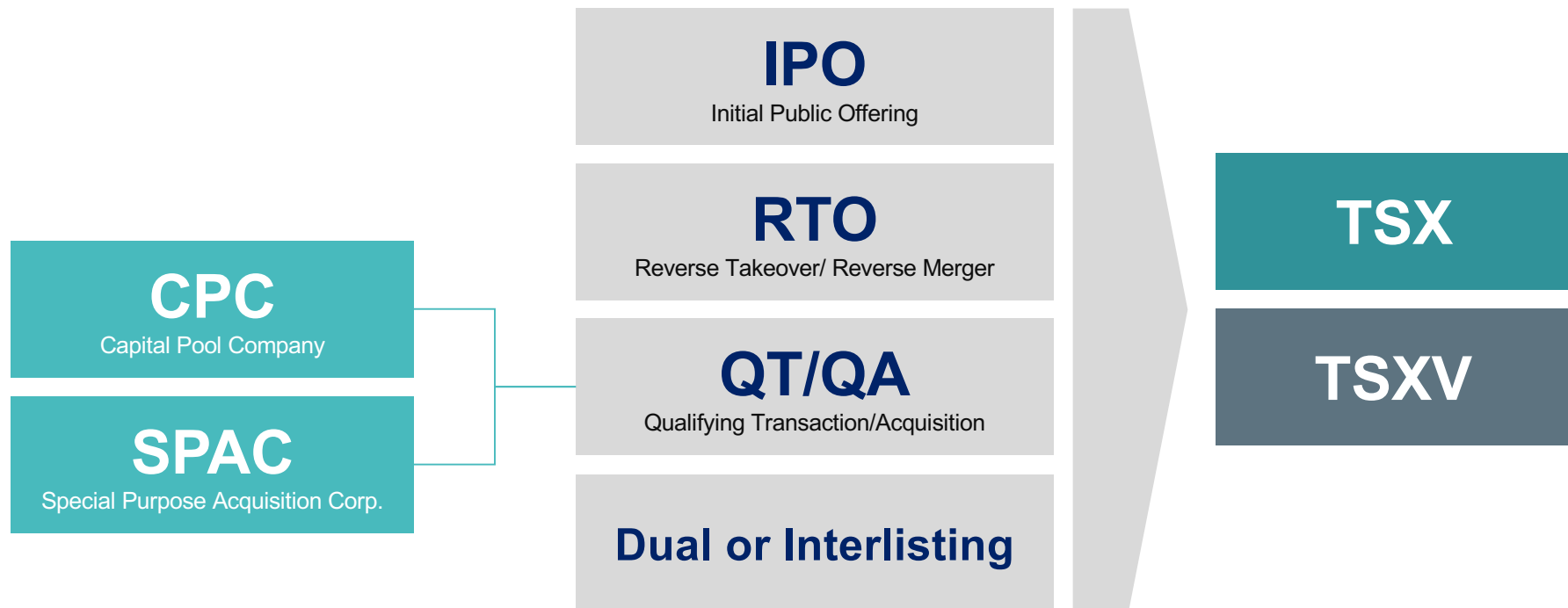


\$4.3T

TOTAL MARKET CAPITALIZATION

FLEXIBLE PATHS TO LISTING

EMPOWER COMPANIES TO STRUCTURE THE BEST TRANSACTIONS



WORLD-LEADING TWO-TIER MARKET

OUR EQUITY MARKETS FINANCE COMPANIES ACROSS THEIR LIFECYCLE

TORONTO STOCK EXCHANGE

ELIGIBILITY FOR GLOBAL AND
S&P/TSX INDEX PRODUCTS

AVERAGE TIME TO GRADUATION:
4.4 YEARS



TSX VENTURE EXCHANGE

CUSTOMIZED REGULATORY REGIME FOR
SMALL AND MEDIUM-SIZED COMPANIES

700+

TSX VENTURE COMPANIES HAVE
GRADUATED TO TSX SINCE 2000

32%

OF ALL CURRENT CORPORATE TSX
COMPANIES ARE TSXV GRADS

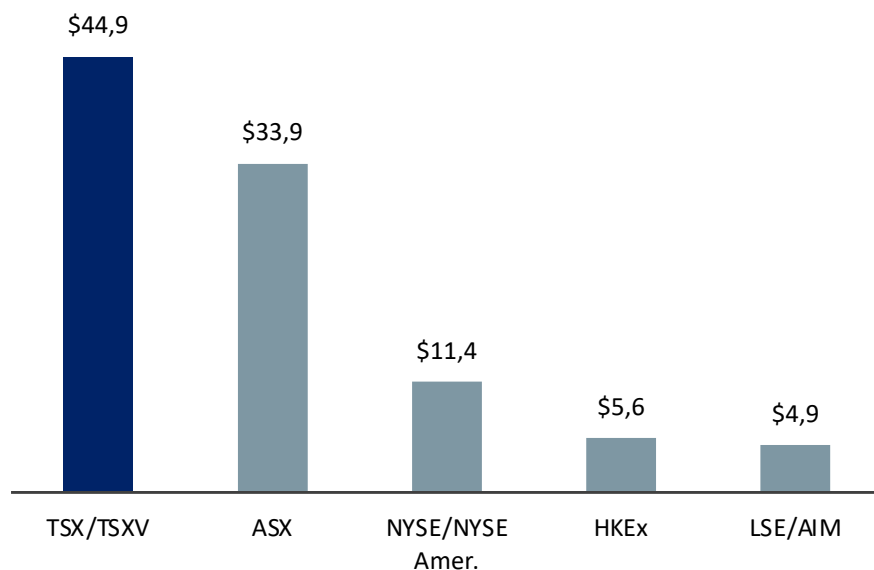
21%

OF S&P/TSX COMPOSITE INDEX
CONSTITUENTS ARE GRADUATES
FROM TSXV

LEADERSHIP IN THE MINING SECTOR

THE WORLD'S MINING COMPANIES LOOK TO TSX

GLOBAL MINING EQUITY CAPITAL RAISED
(5-YEAR TOTAL = \$101 BILLION)



35%

OF THE MINING EQUITY CAPITAL RAISED
GLOBALLY WAS ON TSX/TSXV (2017-2021)

42%

OF THE MINING FINANCINGS GLOBALLY WAS
ON TSX/TSXV (2017-2021)

TSX MINING ECOSYSTEM

A GLOBAL, TWO-TIER MARKETPLACE

52%

OF TSX MINING ISSUERS
GRADUATED FROM TSXV

42%

OF GLOBAL PUBLIC MINING COMPANIES ARE LISTED ON
TSX/TSXV

6

MINING GRADS IN 2021

250+

ANALYSTS COVER THE TSX/TSXV MINING SECTOR

300+

TOTAL NUMBER OF MINING
GRADS

6

AVERAGE NUMBER OF ANALYSTS COVERING TSX MINING
COMPANIES

LEADERSHIP IN THE MINING SECTOR

80

NEW LISTINGS
IN 2021

\$10B

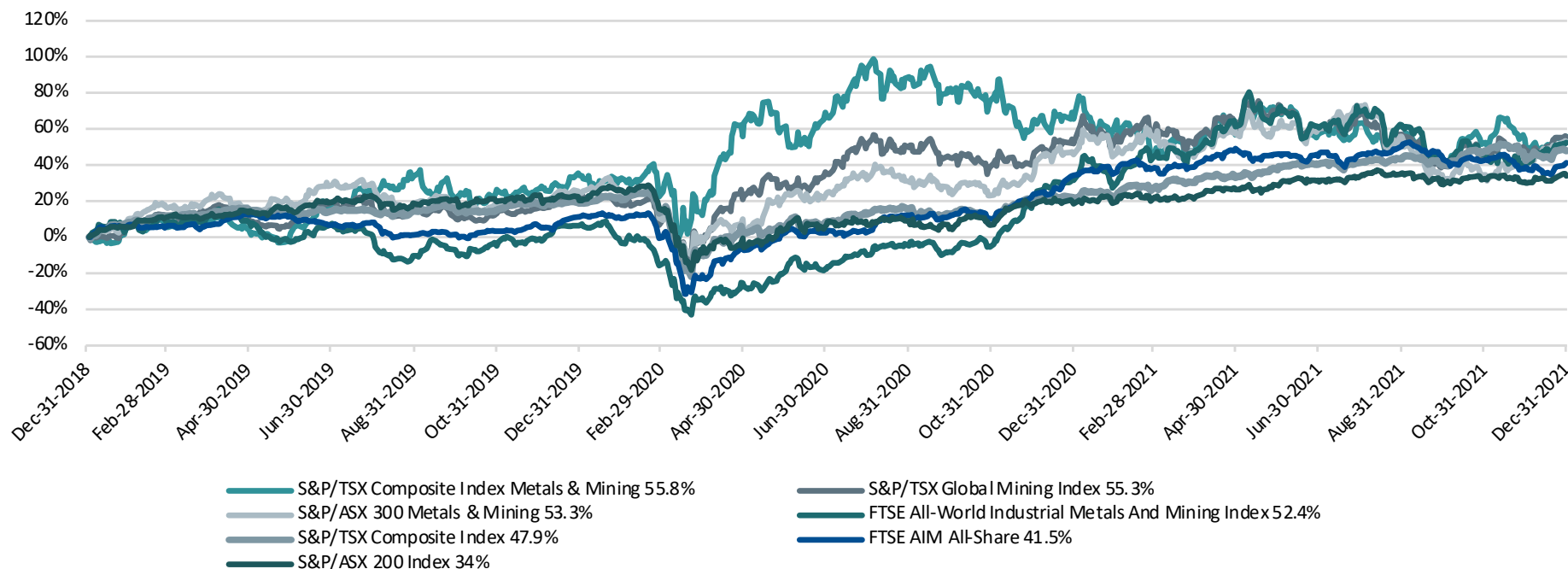
EQUITY CAPITAL RAISED
IN 2021

1,464

NUMBER OF FINANCINGS
IN 2021

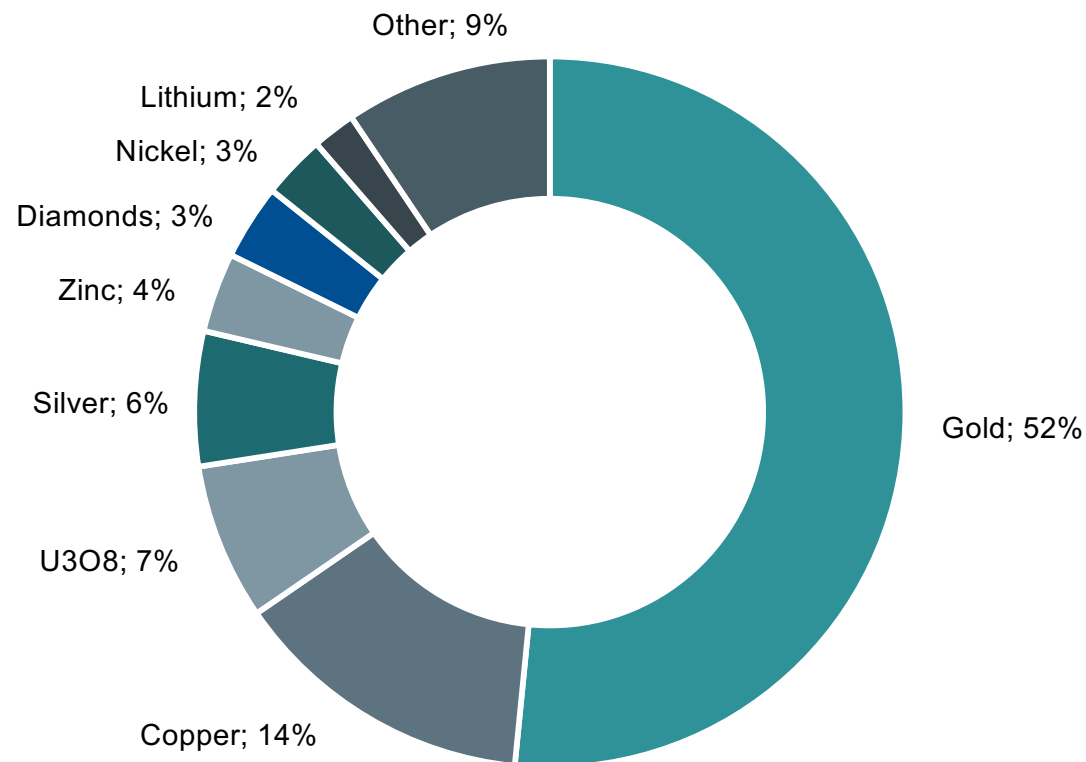
59B

SHARES TRADED ON
TSX/TSXV IN 2021



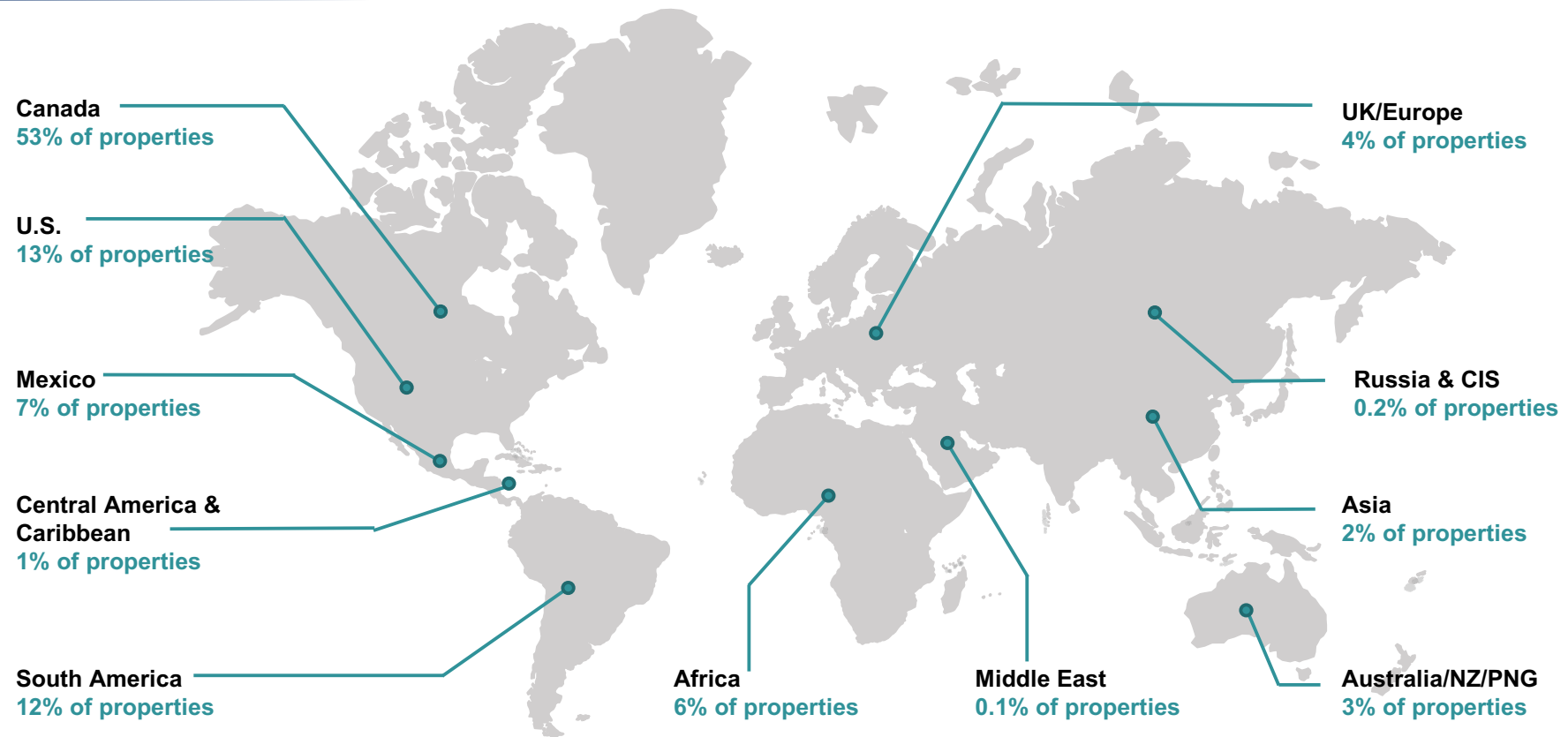
A DIVERSE MINING SECTOR

TSX/TSXV MINING ISSUERS BY PRIMARY COMMODITY



A GLOBAL MINING EXCHANGE

47% OF THE 5,200+ MINERAL EXPLORATION PROJECTS OPERATED BY TSX & TSXV COMPANIES ARE OUTSIDE OF CANADA



GLOBAL MINING EXPERTS

TSX/TSXV IS THE DESTINATION FOR MINING COMPANIES

	# of Mining Issuers	Market Cap (C\$)	# of International Mining	Market Cap (C\$)	Number of Interlisted Mining	Market Cap (C\$)
TSX Venture	967	\$54B	56	\$7.6B	44	\$9.2B
TSX	203	\$504B	46	\$118B	104	\$427B
Total	1,170	\$558B	102	\$125B	143	\$436B

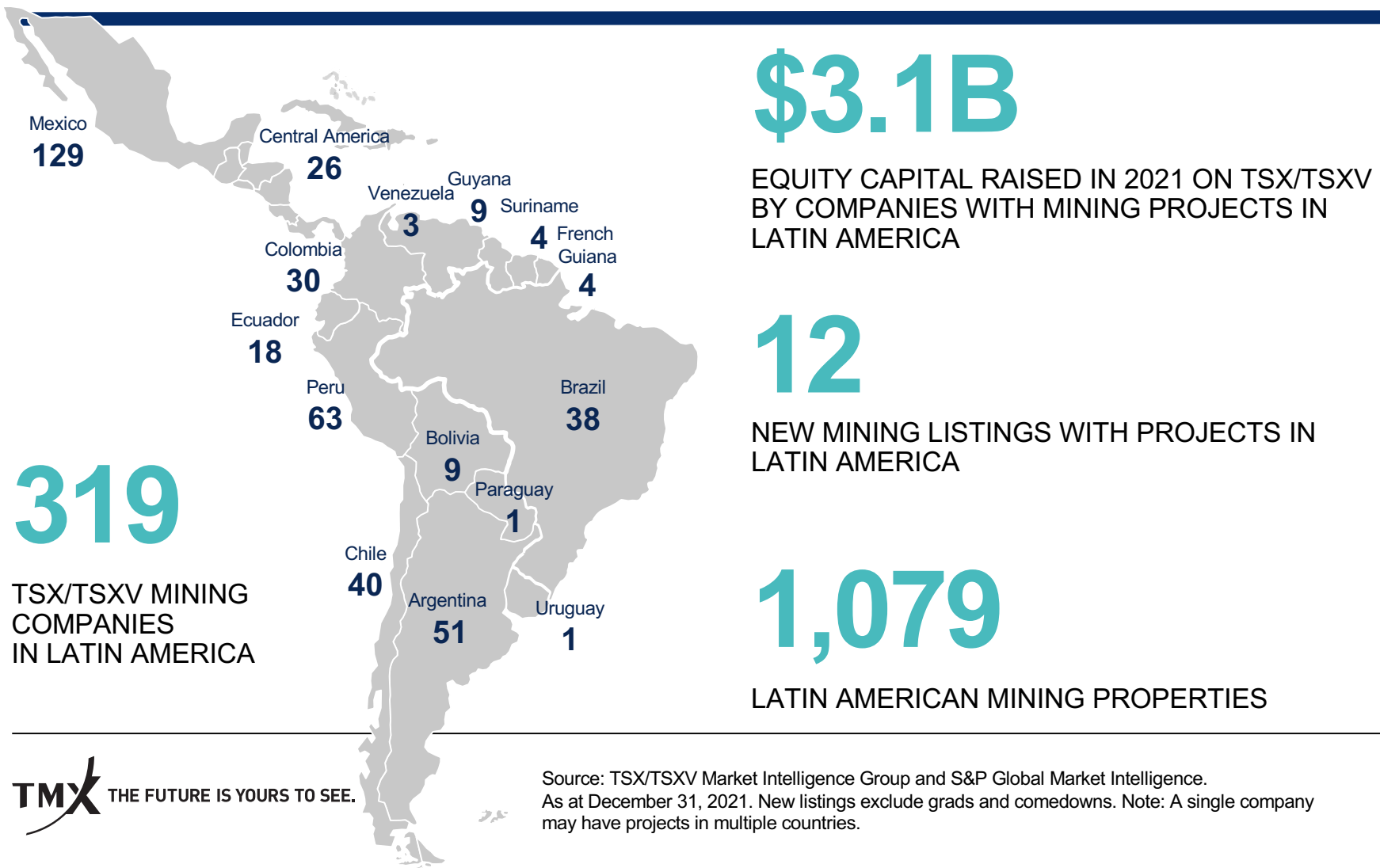
THE LEADING EXCHANGE

2021 MINING MARKETS AT A GLANCE

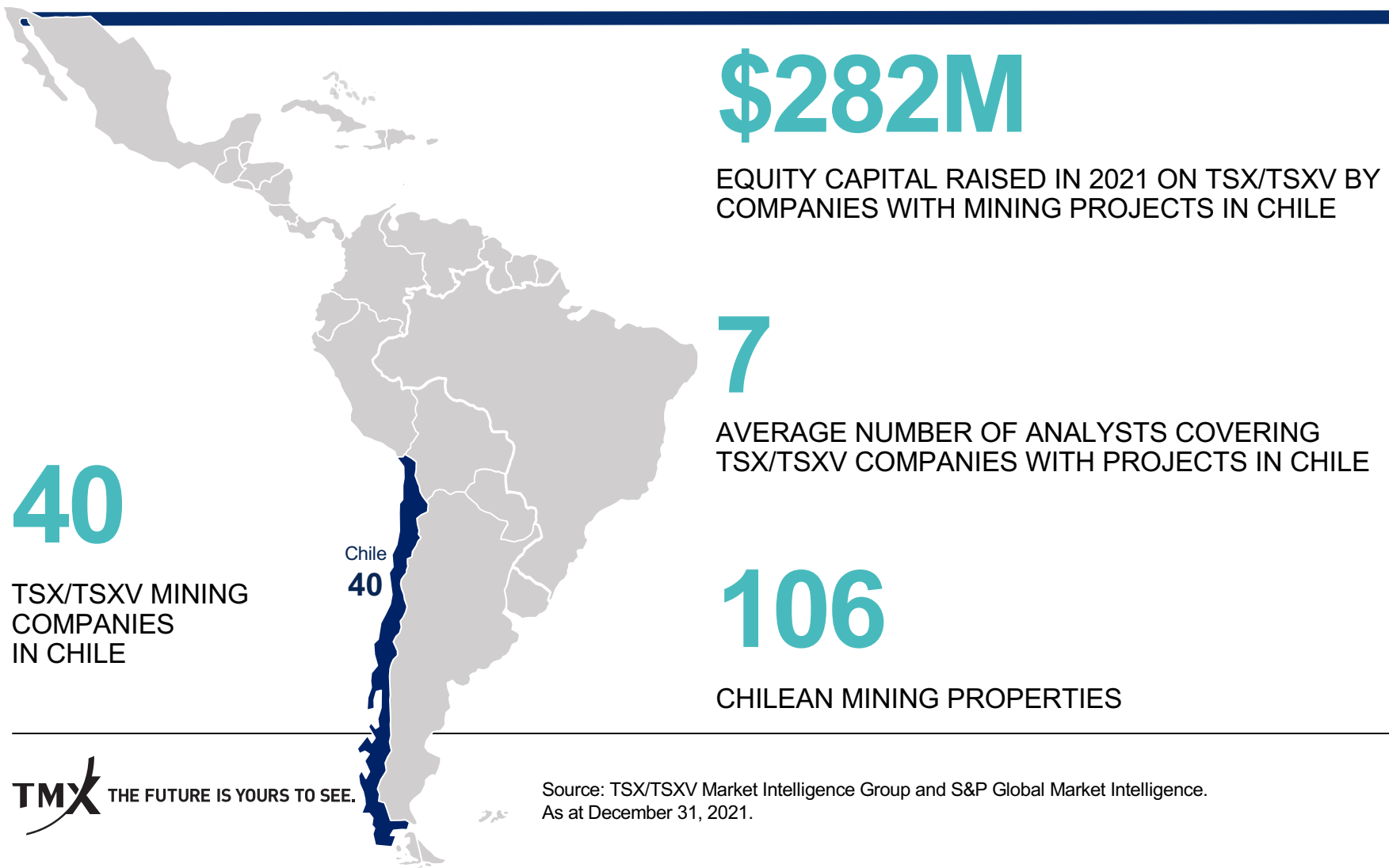
	TSX	TSXV	TSX & TSXV	LSE	AIM	ASX	HKEx	NYSE & NYSE Amer.
New Mining Listings	13	67	80	4	6	111	-	3
Number of Mining Issuers	160	967	1,170	51	101	775	50	80
Market Capitalization (C\$ billions)	504	54	558	359	8.1	552	416	565
Number of Financings	160	1,304	1,464	14	100	966	5	38
Equity Capital Raised (C\$ billions)	3.9	6.0	10.0	0.2	1.5	10.3	0.6	7.1

THE LEADING MINING EXCHANGE

LATIN AMERICAN MINING COMPANIES LOOK TO CANADA



TSX AND TSXV COMPANIES ARE MINING IN CHILE



TSX AND TSXV COMPANIES ARE MINING IN CHILE



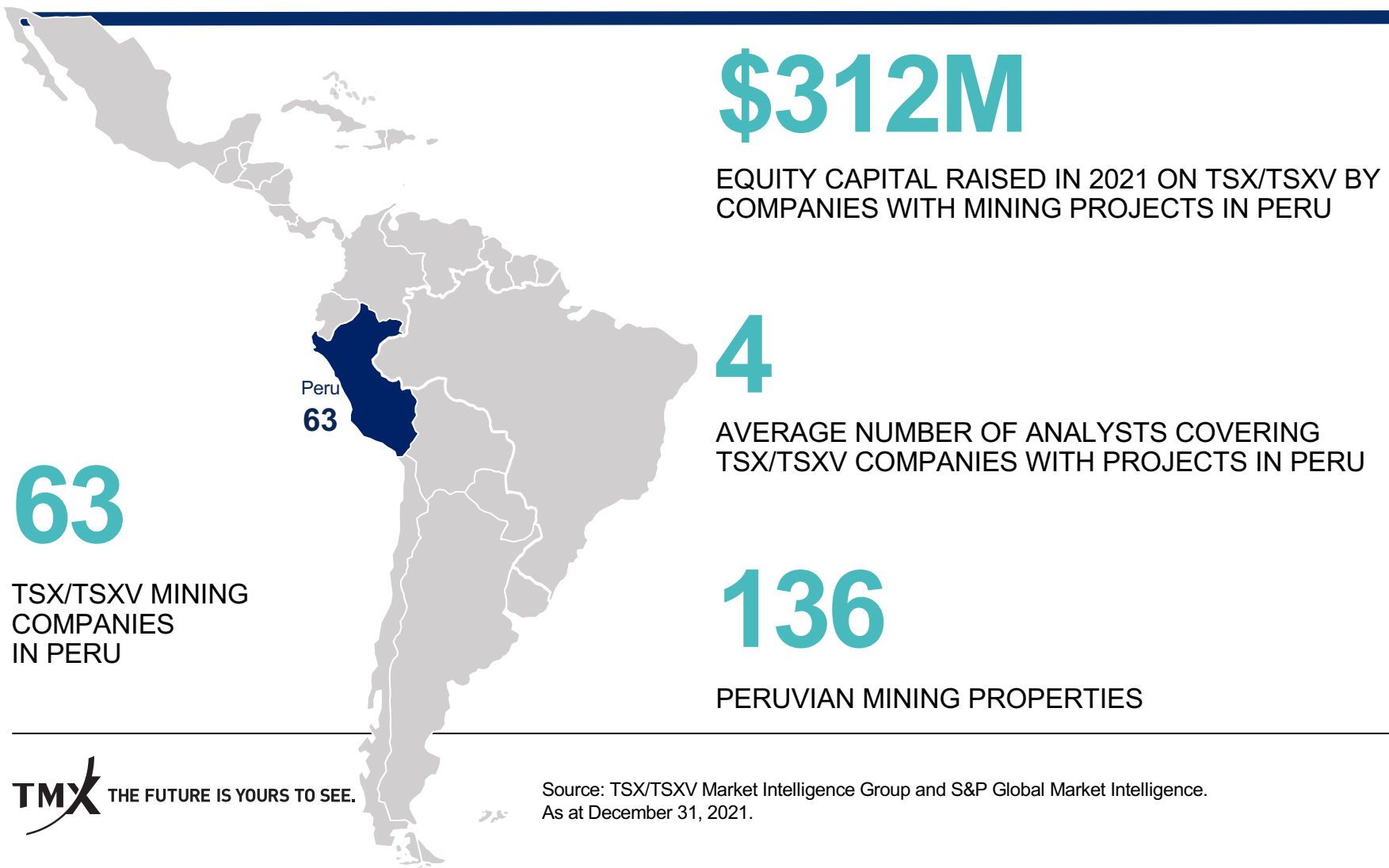
TSX

Amerigo Resources Ltd.	Mandalay Resources Corporation
Barrick Gold Corporation	Marimaca Copper Corp.
Capstone Mining Corp.	Mineros S.A.
Endeavour Silver Corp.	Newcrest Mining Limited
First Quantum Minerals Ltd.	Newmont Corporation
Kinross Gold Corporation	Teck Resources Limited
Lundin Mining Corporation	Yamana Gold Inc.

TSX VENTURE EXCHANGE

Aftermath Silver Ltd.	Mirasol Resources Ltd.
Altiplano Metals Inc.	NGEx Minerals Ltd.
Arena Minerals Inc.	Nobel Resources Corp.
ATEX Resources Inc.	Orestone Mining Corp.
Austral Gold Limited	Power Nickel Inc.
Battery Mineral Resources Corp.	Rio2 Limited
Blue Moon Metals Corp.	San Lorenzo Gold Corp.
Condor Resources Inc.	Solis Minerals Ltd.
Conquest Resources Limited	TDG Gold Corp.
Golden Arrow Resources Corporation	Three Valley Copper Corp.
Lithium Chile Inc.	Torq Resources Inc.
Los Andes Copper Limited	Wealth Minerals Ltd.
Metalla Royalty & Streaming Ltd.	World Copper Ltd.

TSX AND TSXV COMPANIES ARE MINING IN PERU



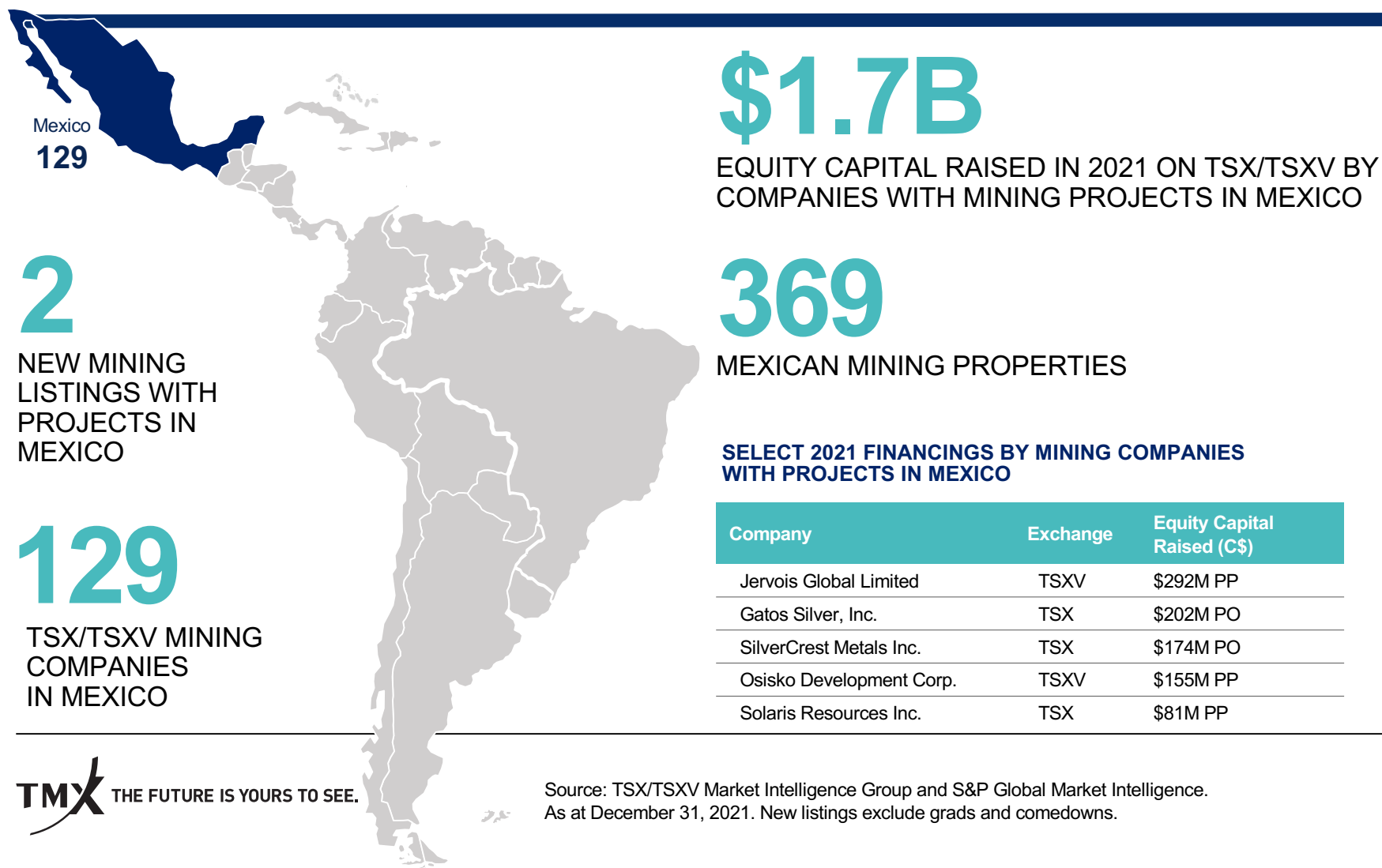
TSX AND TSXV COMPANIES ARE MINING IN PERU



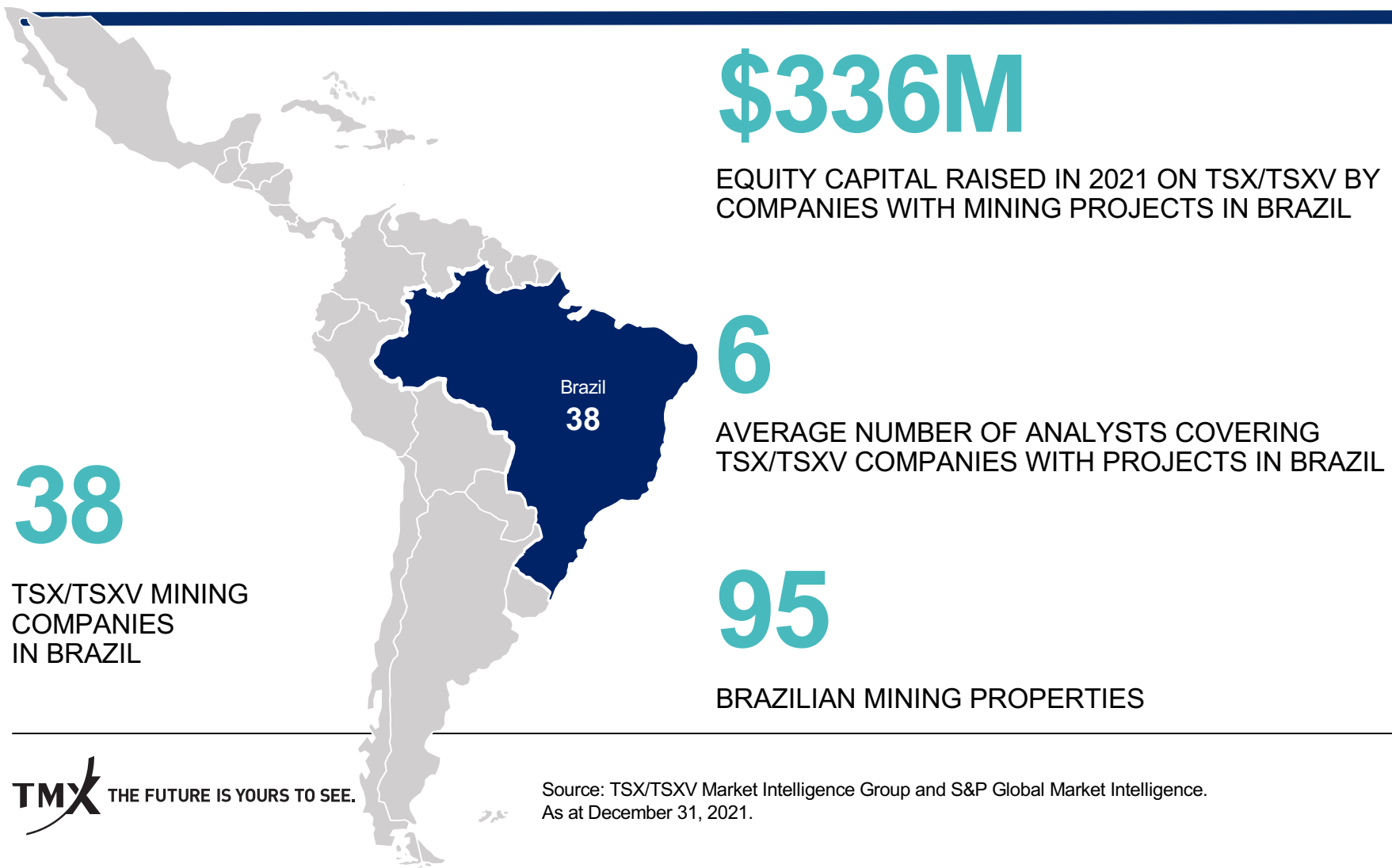
TSX VENTURE EXCHANGE

Aguila Copper Corp.	Mantaro Precious Metals Corp.
Alianza Minerals Ltd.	MAX Resource Corp.
American Lithium Corp.	Mineworx Technologies Ltd.
Anacortes Mining Corp.	Minnova Corp.
Argentum Silver Corp.	NEO Battery Materials Ltd.
Bear Creek Mining Corporation	Nubian Resources Ltd.
C3 Metals Inc.	Palamina Corp.
Camino Minerals Corporation	Panoro Minerals Ltd.
Chakana Copper Corp.	Peruvian Metals Corp.
Condor Resources Inc.	PPX Mining Corp.
Defiance Silver Corp.	Prism Resources Inc.
DLP Resources Inc.	Pucara Gold Ltd.
Element 29 Resources Inc.	Q-Gold Resources Ltd.
Eloro Resources Ltd.	Regulus Resources Inc.
Fidelity Minerals Corp.	Rio Silver Inc.
Fission 3.0 Corp.	Sable Resources Ltd.
G.E.T.T. Gold Inc.	Silver X Mining Corp.
Gold State Resources Inc.	Solis Minerals Ltd.
GPM Metals Inc.	Tier One Silver Inc.
Itafos Inc.	Tinka Resources Limited
Kaizen Discovery Inc.	Turmalina Metals Corp.
Lara Exploration Ltd.	Winshear Gold Corp.
Latin Metals Inc.	Xali Gold Corp.
Lupaka Gold Corp.	Zinc One Resources Inc.

TSX AND TSXV COMPANIES ARE MINING IN MEXICO



TSX AND TSXV COMPANIES ARE MINING IN BRAZIL



TSX AND TSXV COMPANIES ARE MINING IN BRAZIL



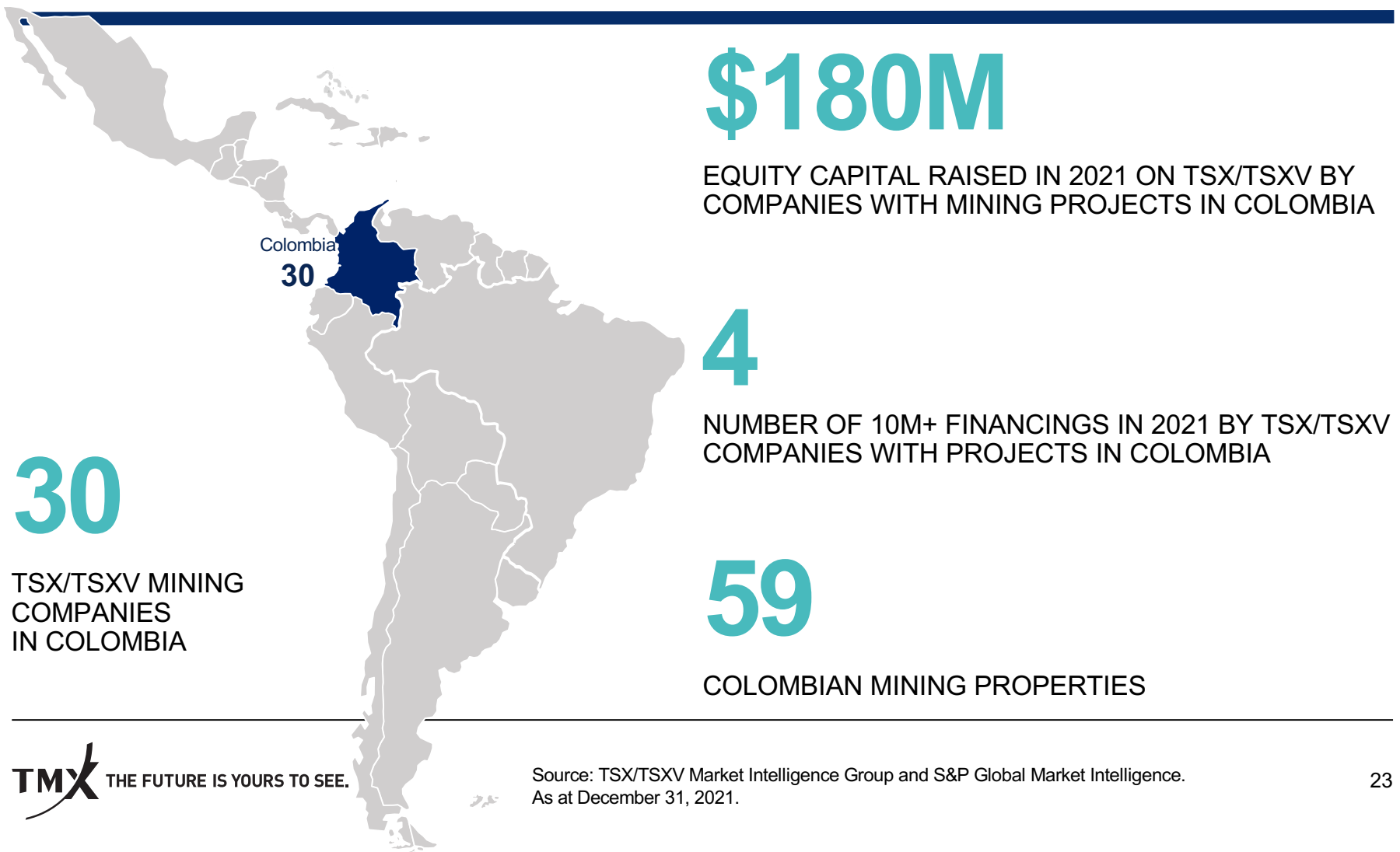
TSX

Aura Minerals Inc.
 Belo Sun Mining Corp.
 Capstone Mining Corp.
 Eldorado Gold Corporation
 Equinox Gold Corp.
 Ero Copper Corp.
 GoldMining Inc.
 Great Panther Mining Limited
 Horizonte Minerals Plc
 IAMGold Corporation
 Jaguar Mining Inc.
 Kinross Gold Corporation
 Largo Inc.
 Lundin Mining Corporation
 Serabi Gold plc
 Talon Metals Corp.
 Teck Resources Limited
 Verde Agritech Plc
 Yamana Gold Inc.

TSXV

Altamira Gold Corp.
 Amarillo Gold Corporation
 Aranjin Resources Ltd.
 Cabral Gold Inc.
 Canada Rare Earth Corp.
 Cerrado Gold Inc.
 Eagle Graphite Incorporated
 G Mining Ventures Corp.
 Giga Metals Corporation
 Itafos Inc.
 Jazz Resources Inc.
 Lara Exploration Ltd.
 Meridian Mining UK Societas
 Sigma Lithium Corporation
 Soma Gold Corp.
 South Atlantic Gold Inc.
 South Star Battery Metals Corp.
 Tristar Gold Inc.
 ValOre Metals Corp.

TSX AND TSXV COMPANIES ARE MINING IN COLOMBIA



TSX AND TSXV COMPANIES ARE MINING IN COLOMBIA



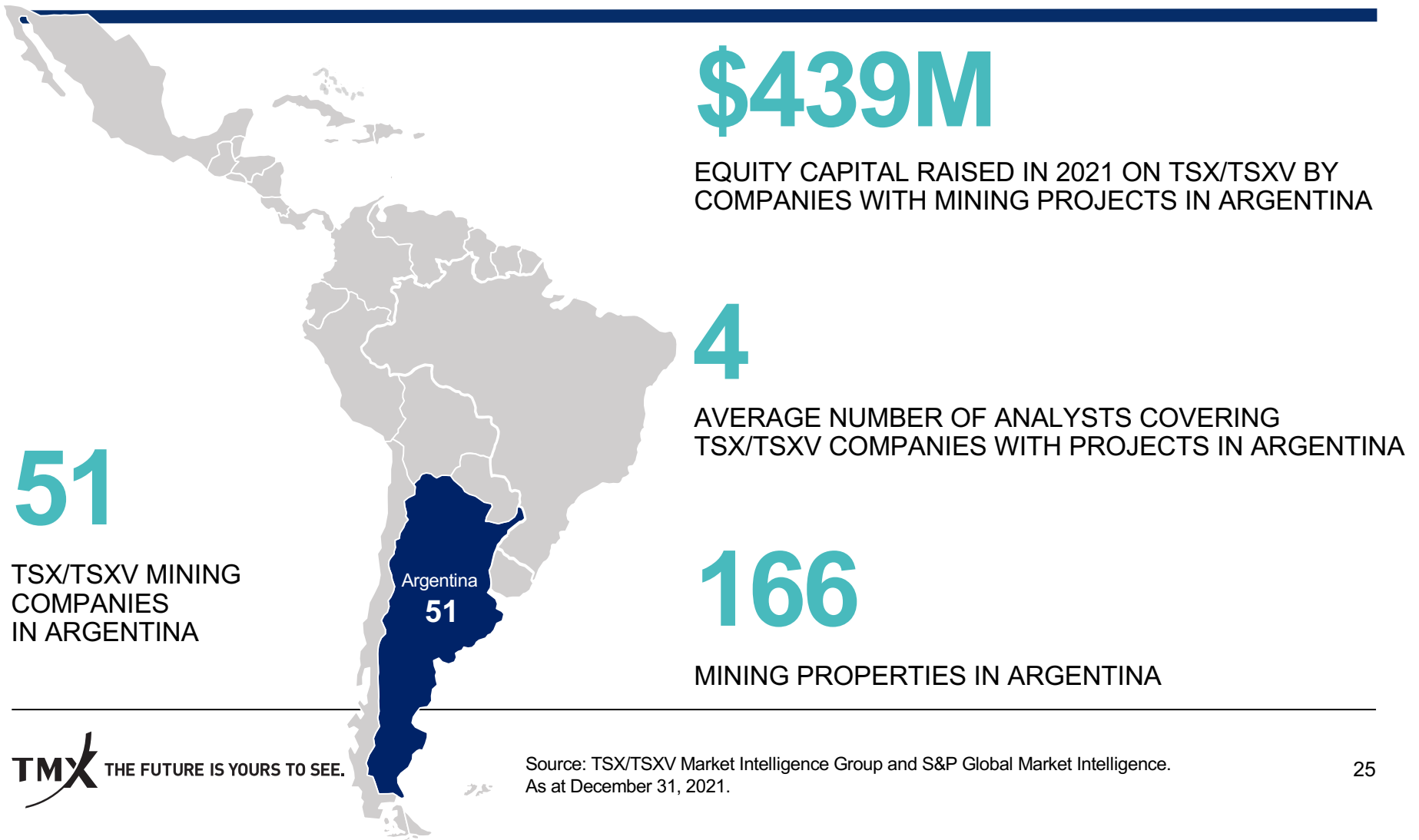
TSX

Agnico Eagle Mines Limited	GCM Mining Corp.
Aris Gold Corporation	GoldMining Inc.
Aura Minerals Inc.	IAMGold Corporation
B2Gold Corp.	Mineros S.A.

TSX VENTURE EXCHANGE

Aloro Mining Corp.	Lake Winn Resources Corp.
AM Resources Corp.	Lara Exploration Ltd.
Angel Gold Corp.	Libero Copper & Gold Corporation
Antioquia Gold Inc.	MAX Resource Corp.
Atico Mining Corporation	Newrange Gold Corp.
Baroyeca Gold & Silver Inc.	O2Gold Inc.
Batero Gold Corp.	Outcrop Silver & Gold Corporation
Collective Mining Ltd.	Royal Road Minerals Limited
Cordoba Minerals Corp.	Rugby Mining Limited
Galway Gold Inc.	Soma Gold Corp.
Jaeger Resources Corp.	Tesoro Minerals Corp.

TSX AND TSXV COMPANIES ARE MINING IN ARGENTINA



TSX AND TSXV COMPANIES ARE MINING IN ARGENTINA



GROWTH ACCELERATOR

- ALL NEWLY-LISTED COMPANIES ARE INVITED TO PARTICIPATE IN OUR COMPLIMENTARY GROWTH ACCELERATOR PROGRAM

1

Company executives select the sessions of interest

2

We arrange a time/place for each one-on-one session

3

Each session is designed to take approximately 60 minutes

SESSION TOPICS

Governance

Principles of Good Governance
Building an Effective Board

Trading

Trading Basics
Understanding your Trading
Role of your Market Maker

Disclosure

TMX Disclosure Requirements
IIROC's Role Regarding Disclosure

Follow-on Transactions

Post Listing Transactions
Declaring Dividends
Initiating a Normal Course
Issuer Bid

Investor Relations

Top Ten Best Practices in IR
Tracking, Targeting & Surveillance
Board Reports
Conducting a Successful AGM

ESG

Importance of ESG
ESG Disclosure Content
How to disclose ESG metrics
ESG Responsibility & Disclosure Channel

For more information:

GUILLAUME LEGARE

HEAD, SOUTH AMERICA

TORONTO STOCK EXCHANGE AND TSX VENTURE EXCHANGE

T +11 4280-4516 (Sao Paulo)
T: +511 708-8756 (Lima)
+56 22 938-1754 (Santiago)
+1 514 907-8820 (Canada)

E Guillaume.Legare@tmx.com
www.Latam.tsx.com



**STAY UP TO
DATE WITH
TSX AND
TSXV**

@TSX_TSXV

**RECEIVE THE
MONTHLY MIG
REPORT IN
YOUR INBOX**

TSX.COM/MIG

The document and the information contained therein are provided "as is" for information purposes only and are not intended to provide investment, financial or other advice, and should not be relied on for any trading, business, financial or other purposes. The information provided is not an invitation to purchase securities listed on Toronto Stock Exchange and/or TSX Venture Exchange. TMX Group Limited and its affiliated companies (collectively, "TMX") do not endorse or recommend any securities referenced in this document. Neither TMX Group Limited, nor any of its affiliated companies or entities, guarantees the completeness of the information contained in this document and we are not responsible for any errors or omissions in, or your use of, or reliance on, the information.

© 2022 TSX Inc. All rights reserved. Do not sell, reproduce or modify this document without TSX Inc.'s prior written consent. TMX, the TMX design, TMX Group, Toronto Stock Exchange, TSX, TSX Venture Exchange and TSXV are the trademarks of TSX Inc.

tmx.com

Appendix



TECHNICAL LISTING REQUIREMENTS

- Minimum Property Ownership
- Management Track Record and Experience
- Sufficient Working Capital and/or Mine Life
- NI 43-101 Report
- Exploration & Development or Producing Requirements

PROPERTY REQUIREMENTS

TSXV – Tier 2

Minimum 50% interest in a qualifying property (\$100,000 of exploration expenditures on the qualifying property in the past 3 years)

Work program: \$200,000

TSX – Exploration

Minimum 50% interest in an advanced property (mineralization three dimensions and at economically interesting grades)

Work program: \$750,000

TSXV – Tier 1

Minimum 50% interest in a Tier 1 property (property with substantial geological merit)

Work program: \$500,000

TSX – Producer

Three years of proven and probable reserves

Commercial production decision made or in commercial production

FINANCIAL TESTS & REQUIREMENTS

TSXV – Tier 2

Adequate working capital for 12 months +
\$100,000 in allocated funds

TSX – Exploration

\$2 million in working capital
Sufficient funds for 18 months
\$3 million in net tangible assets
Appropriate capital structure

TSXV – Tier 1

Adequate working capital for 18 months +
\$200,000 in allocated funds
\$2 million in net tangible assets

TSX – Producer

Adequate working capital
Appropriate capital structure
Non exempt: \$4 million in net tangible assets
+ likelihood of future profitability
Exempt: \$7.5 million in net tangible assets +
pre-tax profits and cash flow



THE FUTURE
IS YOURS TO SEE.

tmx.com